

## Ink, Stamp, & Share Blog Hop FARMHOUSE CHRISTMAS TEALIGHT GIFT BOX



**PLEASE NOTE:** This box fits 2 tealights that measure 1-1/2" dia. X 3/4" deep and a matchbox that measures 2-1/8" x 1-1/2 x 7/16" deep.



Order the supplies for this project at  
<http://www.ginger.stampinup.net>

Contact me at:

<http://www.stampinup.net/esuite/home/ginger/contactme>

### SUPPLIES

Item Name	Item #	Price
Farmhouse Christmas Photopolymer Bundle	149941	\$44.00
Cherry Cobbler Cardstock 4-1/4" x 7-1/8"	119685	\$8.50
Mossy Meadow Cardstock 5-1/8" x 8", 4-1/4" x 4-1/2"	133676	\$8.50
Crumb Cake Cardstock 1-1/2" x 4-1/4"	120953	\$8.50
Whisper White Cardstock pieces	100730	\$9.75
Festive Farmhouse Designer Series Paper	147820	\$11.00
Memento Tuxedo Black Ink	132708	\$6.00
Cherry Cobbler Classic Stampin' Pad	147083	\$7.50
Mossy Meadow Classic Stampin' Pad	147111	\$7.50
Regals Stampin' Write Markers (Cherry Cobbler, Old Olive)	147155	\$30.00
Neutrals Stampin' Write Markers (Merry Merlot, Smoky Slate, Gray Granite, Basic Gray)	147158	\$30.00
Crumb Cake Stampin' Blends Marker Combo	144601	\$9.00
Smoky Slate Stampin' Blends Marker Combo	145058	\$9.00
Soft Suede Light Stampin' Blends Marker	146874	\$4.50
Cherry Cobbler Light Stampin' Blends Marker	144576	\$4.50
Mango Melody Dark Stampin' Blends Marker	147944	\$4.50
Cajun Craze Stampin' Blends Marker Combo	147931	\$9.00
Shaded Spruce Stampin' Blends Marker Combo	147938	\$9.00
1-1/2" Circle Punch	138299	\$16.00
1-1/4" Circle Punch*	119861	\$16.00

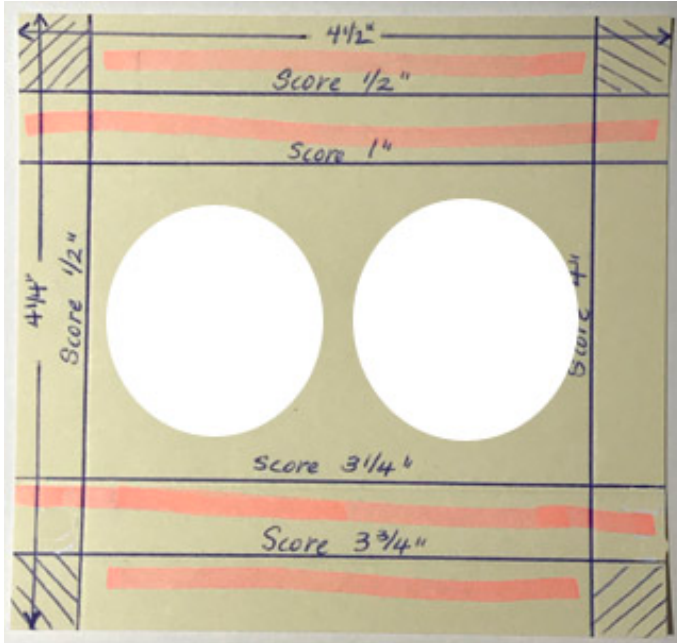
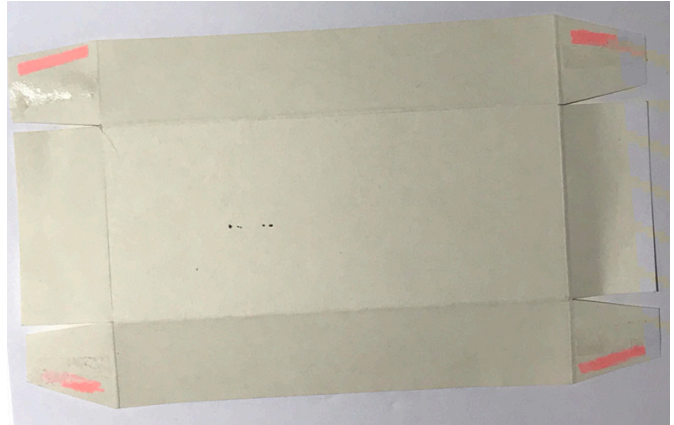
Take Your Pick Tool	144107	\$10.00
Big Shot	143263	\$110.00
Paper Snips	103579	\$10.00
Multipurpose Adhesive Sheets	144106	\$10.00
Tear and Tape	138995	\$7.00
Glue Dots	103683	\$5.25
Mini Stampin' Dimensionals	144108	\$4.00
Heat Tool	129053	\$30.00
Tissue & Copy Paper		

\*May be optional if you choose to stamp/color two truck images. See Candle instructions #2.

## INSTRUCTIONS

### BOX BASE

1. Cut a 4-1/4" x 7-1/8" piece of Cherry Cobbler cardstock. Using the "snow dots" stamp and Cherry Cobbler Classic Ink, stamp the entire piece with dots. Score the piece at 1" on all four sides. Cut tabs on ends as indicated in picture below and apply Tear and Tape on tabs marked with pink. Assemble box base by folding in and attaching ends.
2. Cut a 4-1/2" x 4-1/4" piece of Mossy Meadow cardstock. Using the "snow dots" stamp and Mossy Meadow Classic Ink, stamp the entire piece with dots.
3. Score along the 4-1/2" side at 1/2" and at 4". Turn piece to 4-1/4" side and score at 1/2", 1", 3-1/4" and 3-3/4". See picture below.
4. From the 1/2" sides punch 1-1/2" circles approximately 1/8" from the score line. If you go in too far the center strip will become too narrow and tear when the candles are inserted.



5. Snip around the circles approximately 1/4" apart. On the back of the piece use the Take Your Pick tool to trace the perimeter of the circle outside the snipped lines. Gently use your fingers to fold the snipped pieces toward the back of piece.
6. Cut off the corner pieces marked with the striped lines.
7. Place Tear and Tape on areas indicated in pink. Remove protective paper from Tear and Tape.
8. Cut from the edge of the cardstock to the 1/2" score line on the 4" sides to create tabs. Fold tabs toward center end pieces to create a half box.
9. Fold the other sides down and underneath piece. Attach to left side of box base leaving room for matches on the right.

### MATCHBOX

1. Measure the length and wide of the top of your matchbox and cut two pieces of the plaid Designer Series Paper (DSP). My box measures 2-1/8" x 1-3/8". Attach DSP to top and bottom of matchbox being careful to stay away from striker area.

## CANDLES

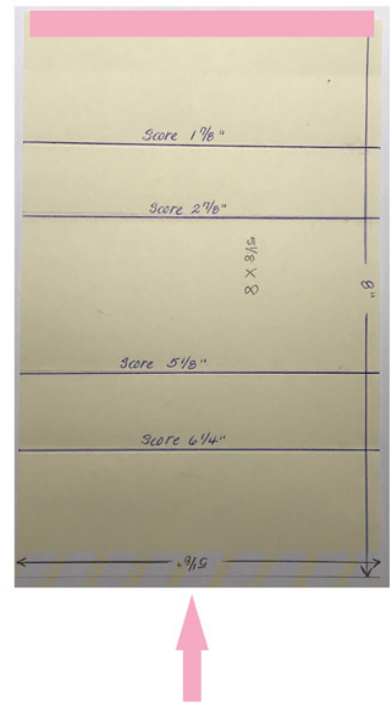
1. With Memento Ink, stamp the truck onto tissue paper. I used only one truck but if you want you can stamp two trucks to be punched out later. Color truck with Stampin' Write Markers.
2. Place a piece of copy paper behind the tissue paper and punch a circle through both pieces. If you are using one stamped image, punch one circle using the 1-1/4" punch and then a second 1-1/4" punch as close as you can.  
\*If you stamp two trucks you may use the 1-1/2" Circle Punch instead of the 1-1/4" Circle Punch.
3. Poke a small hole using the Take Your Pick tool in the center of each tissue paper piece. You may discard the copy paper.
4. Gently slide the tissue over the wick of the candle. With your Heat Tool, begin to melt enough wax to just cover the paper. **KEEP YOUR HEAT TOOL ABOUT 10" FROM CANDLE WHEN DOING THIS!!**

## BOX WRAP

1. Cut a piece of Mossy Meadow cardstock 5-1/8" x 8" and using Mossy Meadow Classic Ink, stamp the "snow dots" stamp over the entire piece.
2. Along the 8" edge score the cardstock at 1-5/8", 2-7/8", 5-1/8" and 6-1/4".
3. Place a strip of Tear & Tape along one of the 5-1/8" ends, **flip the cardstock over** and place another piece of Tear & Tape on the other end.
4. Fold and burnish the score lines, remove Tear & Tape protective sheet and wrap around box. Do not wrap too tightly as box will be difficult to slide.

## IMAGES & DIE CUTS

1. Stamp the house in Memento Tuxedo Black ink on Whisper White cardstock and color with Stampin' Blends. Main house/Lt. & Dk. Crumb Cake, Shutters & Door/Lt. Cherry Cobbler, Roof & Gable/Lt. & Dk. Smoky Slate, Porch Beams, Deck, and Upper Trim/Lt. Soft Suede, Window Panes/Lt. Smoky Slate & Dk. Mango Melody, Chimney/Lt. & Dk. Cajun Craze, Wreath/Lt. & Dk. Shaded Spruce & Bow/Lt. Cherry Cobbler
2. Stamp sentiments in Memento Tuxedo Black ink on woodgrain DSP from Festive Farmhouse DSP.
3. At the same time place house, sentiments, Crumb Cake for fence, and Cherry Cobbler for box onto Big Shot platform and cut.
4. Assemble box front as shown in picture using Stampin' Dimensionals for house and small sentiment and Mini Glue Dots for bows.



If you have any questions, please feel free to contact me, Ginger Rabesa, at [stampingthecape@gmail.com](mailto:stampingthecape@gmail.com)