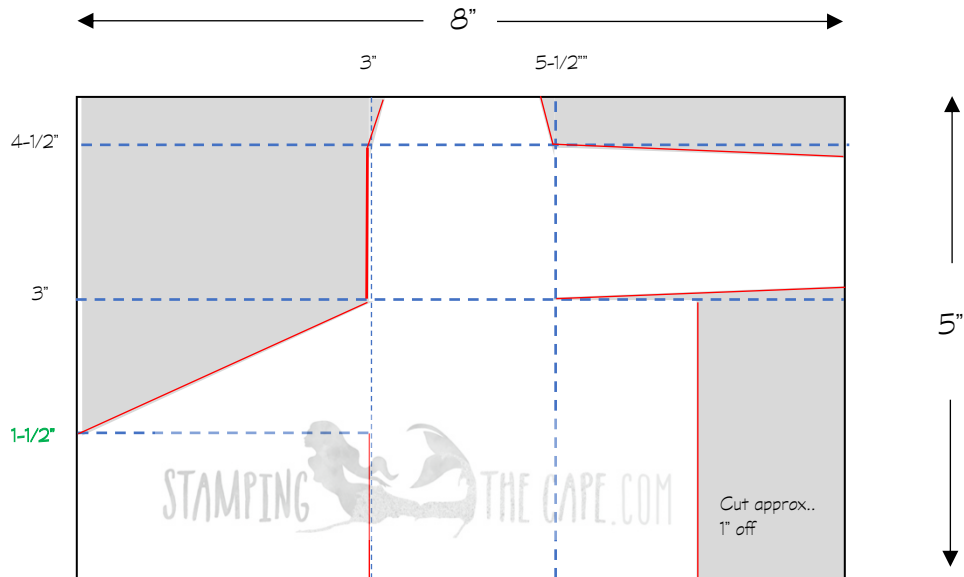


## ALTERED MINI COFFEE CARRIER



Score Line - - - - -  
 Cut Line —————  
 Cut Off   
 Score AFTER 1-1/2  
 Scoring along 8" side

### MEASUREMENTS:

- 2 pcs of cardstock 5" x 8"
- 2 pcs of DSP 2-3/8" x 2-7/8" - Front & back of carrier
- 2 pcs of DSP 1-3/8" x 2-3/8" - Sides of carrier
- 3 or 4 pcs of DSP 1-3/8" x 2-7/8" for angled pieces\*

If covering both the inside and outside triangle areas, you will need to cut one 1-3/8" x 2-7/8" piece from the top left corner to bottom right corner and one piece from the top right corner to the bottom left.

**\*NOTE:** If using directional pattern DSP, you must be aware of what angle you will cut your paper to fit in the appropriate triangle.

